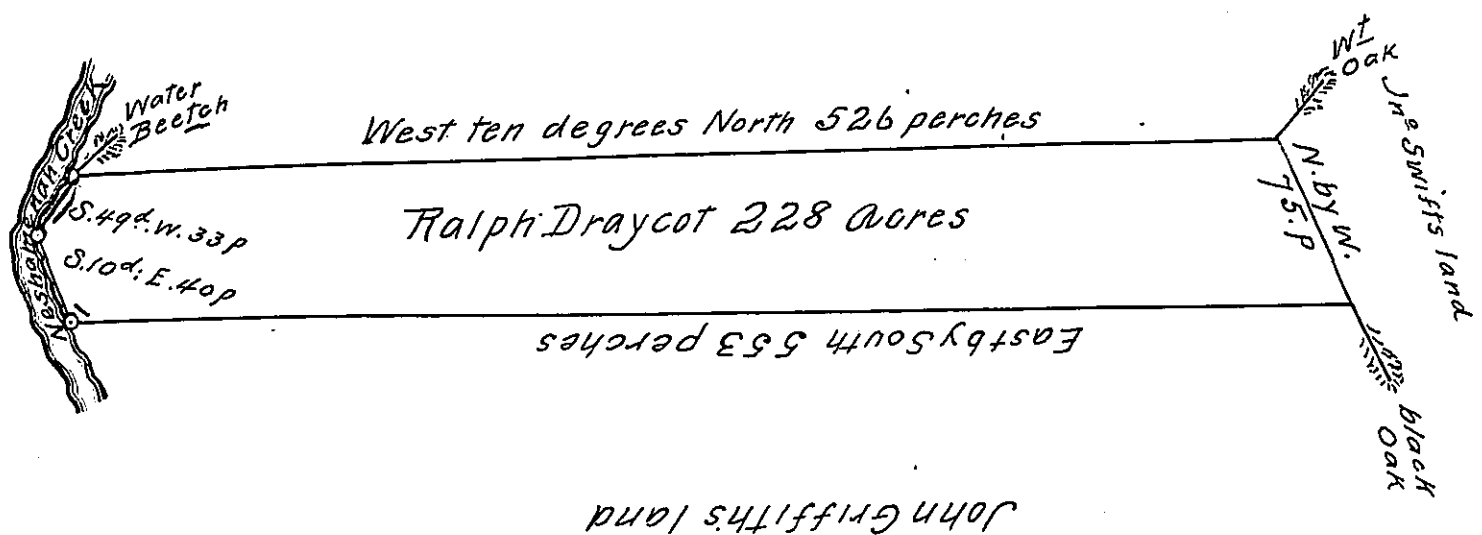


Evan Griffith's land



John Griffith's land

By virtue of a general Warrant from the Commissioners of Property to me directed bearing date the ___ day of the ___ month 170___ to Resurvey all the tracts and parcels of Land within the County of Bucks which may reasonably be Suspected to have been unduely Surveyed when first taken up and have not yet been rectified, Resurvey a Certaine Tract of land neare Southampton in the Sd County Laid out to Widdow Walmsley, now in the possession of Ralph Draycot, Beginning at a Water Beetch Standing by Neshamenah Creek being a Corner of Evan Griffith's land, Thence by the Sd Griffith's line West ten degrees North five hundred twenty six perches to a White Oak in John Swift's line, Then by the Sd Swift's land North by West Seventy five perches to a black Oak, Then by land laid out to Israel Taylor East by South five hundred fifty three perches to a Birch tree by the Sd Neshamenah, Then down the Several Courses thereof to the place of beginning Containing Two hundred Twenty Eight acres, Resurveyed the 6th day of the 9th month 1703.

By me John Cutler

IN TESTIMONY that the above is a copy of the original remaining on file in the Department of Internal Affairs of Pennsylvania, made conformably to an Act of Assembly approved the 16th day of February, 1833, I have hereunto set my Hand and caused the Seal of said Department to be affixed at Harrisburg, this 14th day of June 1909

Henry Houch
 Secretary of Internal Affairs.